


 **URBANISM AND GENDER:
A NECESSARY VISION FOR ALL**


Barcelona Thursday 28th April
Equipment: daily infrastructures

Gender Sensitive Urban Planning

**M
&
M** Monika Jaeckel
Marieke van Geldermalsen

Coaching & Research in Social Innovation


Introduction 

Gender perspective changes priority in planning 

care work & reproductive tasks
in families and communities

Make the crucial difference
between

House	-	Home
City	-	Community



Gender Sensitive Urban Planning

M
&
M

- Introduction
- Principles of Gender Sensitive Urban Planning
- Urban Development from the Bottom up
- Conclusions and Recommendations
- Questions and discussion

Principles of Gender Sensitive Urban Planning

M
&
M

Seven Principles of Gender Sensitive Urban Planning

- 1.Reclaiming Public Space for Everyday Life
- 2.The City is for All
- 3.The Power of Presence
- 4.The Importance of the Local
- 5.Re-integrating the Culture of Care into Public Life
- 6.Civic Engagement and Integration
- 7.Local Economy

high-tech urban hardware facilitates a male lifestyle

M
&
M

The dominant sectoral approach in urban planning leads to

segregated separate spheres for work, leisure, residence, etc.

technocratic efficiency of monocultural urban environments is counterproductive for caregivers



Principles of Gender Sensitive Urban Planning

Reclaiming Public Space for Everyday Life

M
&
M

multifunctional urban spaces match a multi-tasking daily reality

Diversity

- in function: mixed use
- In space: short distances, proximity
- In time: synchronised timing of services

Principles of Gender Sensitive Urban Planning

The City is for All

Urban environment is adapted to the strongest

Mobility de-links social contacts from neighborhoods.

M & M

Principles of Gender Sensitive Urban Planning

The Power of Presence

Sustainable Neighborhoods are mixed

- * population
- * interests & needs
- * time, care, skills, social, cultural, monetary and symbolic 'capital'

safety + liveliness depends on people who invest time, energy, creativity, presence & social networks locally

M & M

Principles of Gender Sensitive Urban Planning

The Importance of the Local



Reclaiming the local in urban development:

- spatial use
- neighborhood & community development,
- civic engagement, integration,
- local economy

Bridging private - public, informal - formal

The local social and spatial dimension carries an important potential for the development of new forms of social solidarity and social networks.

Principles of Gender Sensitive Urban Planning

A village in the city

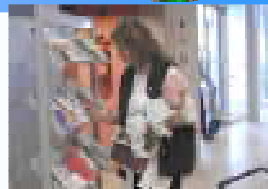


Spread care giving tasks

Multi generational living

Close to home services

Aging in a community setting




Principles of Gender Sensitive Urban Planning

Public Living Rooms

Personal public space and local support networks

- collective responsibility
- organisation of reproductive tasks
- reintegration of care into public life
- Shift in gender division
 - + burden of care work

access to public recognition visibility



Principles of Gender Sensitive Urban Planning

Civic Engagement and Integration

Local public space =
informal, familiar, small scaled

=> it enables to actively
contribute skills, resources and
participate in local governance

Often it is women who are most
active on the smaller scaled
community level



Principles of Gender Sensitive Urban Planning

Validating all contributions: Local Economy

Local Economy: linking all contributions to €

The diagram features a large blue circular arrow. The top half of the arrow is labeled 'social & cultural capital' and the bottom half is labeled 'Economic capital' with a Euro symbol (€) next to it. To the right of the arrow is a cartoon illustration of a man with a broom and a woman carrying a large stack of boxes. To the left of the arrow are three small photographs: a woman walking a dog, a woman at a table, and a woman in a kitchen.

Urban Development from the Bottom up

- Neighborhood Initiatives
 - the Example of the Mother Centers
- Women and Child Friendly Cities
- The Learning City
- New Approaches to Governance

Urban Development from the Bottom up the Example of the Mother Centers



Principles of Mother Centers

- * Self-help movement
- * Work is paid
- * Open program
- * Children are a part of it



Mother Centers

- * Claim public space
- * Claim acknowledgment for everyday life expertise,
- * participate in local governance



Mother Centers International Network **mine**



linking 750 Mother Centers in 15 countries



Soon to follow: Iraq, Burundi, Nepal, Sudan, Ethiopia,...

Urban Development from the Bottom up Women and Child Friendly Cities

M
&
M

It takes more than parents to raise children, it takes a village

Family friendly environment,
inside & outside the Mother Center

up-scale elements of Mother Centers
to city planning and whole
settlements



Urban Development from the Bottom up Women and Child Friendly Cities

M
&
M

Not the Chicken, Not the Egg, but the Nest!

- * Social structures to precede the physical
- * Stimulate civic involvement & ownership
- * Community building part of urban planning
- * Social cohesion
part of economic
development



More on www.nest.cc

Urban Development from the Bottom up The Learning City

M
&
M

Gender perspective in shaping urban space

- hardware
- software
- orgware

Neighborhood Academy
... Knowledge from within

+

Grassroots Women International
Academy (www.GWIA.net)

... Knowledge from outside

=

Organise settlements as
a learning organisation



Urban Development from the Bottom up New Approaches to Governance

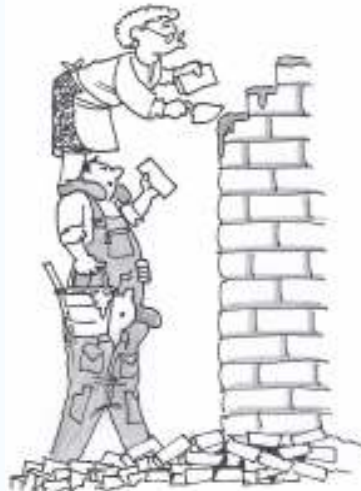
M
&
M

Changing from reactive to proactive planning

Development processes need to
steered in environments where
government has less power

Creative towns
require creative management

Network planning
requires network governance



Urban Development from the Bottom up New Approaches to Governance



Leading by stepping back: De-institutionalization + strengthening self help & involvement

A learning process on all levels

Pro-actively stimulate civic participation
Partnership building



Women's participation & leadership is key to the process

Conclusions

People are not a problem but the richest assets municipalities have

Neighborhoods need to come alive in a process of inhabitant involvement and community building

local community as equal partner can provide the elements that physically perfect solutions cannot provide



Recommendations

M
&
M

- * Mixed, integrated use of space
- * Equal investments in hardware, software & orgware of human settlements
- * Supporting inhabitants to provide for their own needs & develop own solutions
- * Providing for self managed meeting spaces for inhabitants in housing compounds & residential areas
- * Public infrastructure that welcomes children, elderly as well as other dependents into public life
- * Allowing for multiple, flexible use of public space

Recommendations

M
&
M

- * Enabling conditions for local economy, small business
- * Creating experimental space in communities to allow development of bottom up creativity & innovation
- * Creating enabling conditions for initiatives like Mother Centers or Neighborhood Academies
- * Re-channeling resources to grassroots initiatives
- * Acknowledging inhabitants and local communities as equitable partners in urban development
- * Supporting women's participation and leadership in local governance and community development.

Thank you for your attention

M
&
M

- www.mine.cc • Jaeckel@mine.cc •
- www.GWIA.net • M.M@GWIA.net •
- www.nest.cc • Geldermalsen@nest.cc •

M
&
M

- Spijkerstraat 331 • NL-6828 DK Arnhem • Netherlands •
- T/F ++31 26 3707 961 •